

SIERRA 33



DOUBLE STOREY



4



3



2

Width: 11.21m

Length: 18.86m

Total Size: 309.85m² / 33.31sq

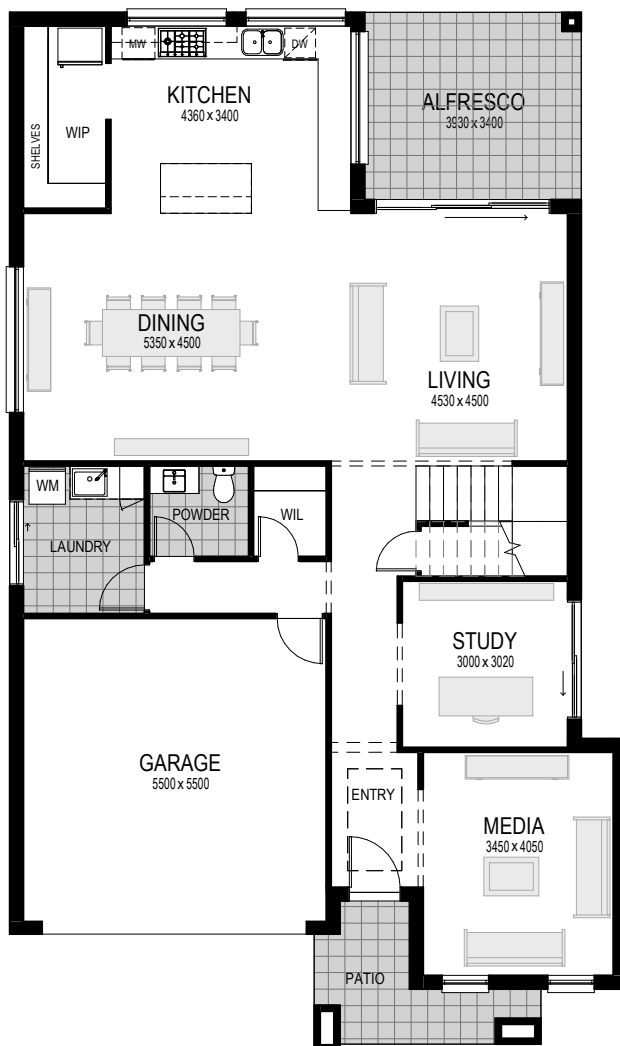
Frontage: 13.36m

The Sierra is a marvel of modern home design, perfect for families wanting enviable space inside and out. Luxurious and spacious the Sierra provides generous living areas over two floors and plenty of tasteful features such as a grand fireplace in the main living area and a mud room opposite the internal garage door.

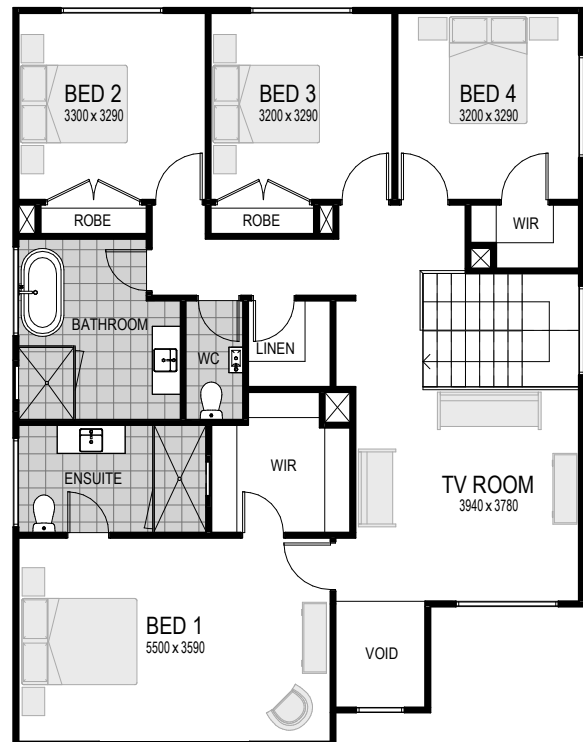
A large and welcoming open plan living/dining/kitchen area is one of the Sierra's most enticing drawcards. With a generous marble island bench, large butler's pantry and servery-style windows that open-up to an alfresco area on two sides, the Sierra enables you to live the way you want to live.

Well considered design features enable natural light and space to breathe warmth into the Sierra's well-appointed interior, creating a true sense of being 'home'. With a large footprint this double-storey design best suits a larger block.

For more information on the Sierra double storey home design, call us on 1300 757 810, or email sales@ansahomes.com.au.



Ground Floor Plan



*Floorplan and home sizing relates to Industry. Other facades may differ slightly.

First Floor Plan

ON DISPLAY AT
HOMEWORLD
 MARSDEN PARK - OPEN 7 DAYS

Contact us on 1300 757 810 or visit ansahomes.com.au

ANSA Homes gives no warranty and make no representation as to the accuracy or sufficiency of any description, illustration, photograph or statement contained in this document and accepts no liability for any loss which may be suffered by any person who relies either wholly or in part upon the information presented. Photographs and illustrations in this brochure are intended to be a visual aid only. All information provided is subject to change without notice. Floor plan size may vary according to façade selected. Copyright ©2019. This plan is the property of ANSA Homes and may not be used in whole or part. Legal action will be taken against any person who infringes the copyright.