

BROOKLYN 32



DOUBLE STOREY



4



3



2

Width: 10.77m

Length: 18.75m

Total Size: 291.59m² / 31.97sq

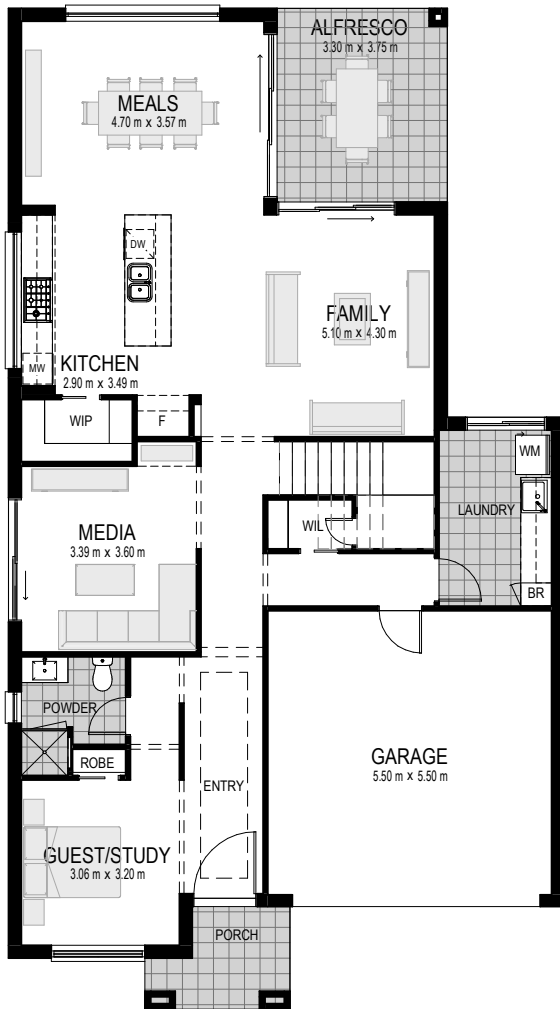
Frontage: 11.92m

ANSA Homes is Australia's leader in designing award-winning, multi-generational homes for modern Australian families of all shapes and sizes. The double-storey Brooklyn is a fantastic example of our pioneering 'two homes under one roof' design philosophy.

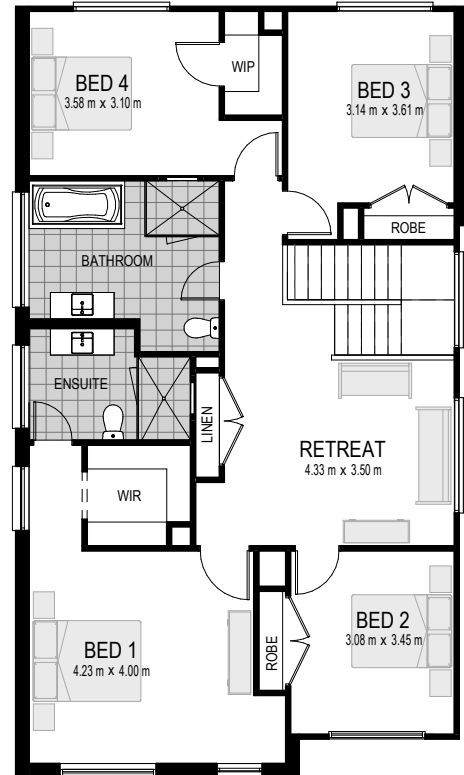
With an assortment of rooms that can function as multi-use spaces, the Brooklyn provides flexibility so you can set up your home to cater to your family's needs. Live in luxury with free-flowing living spaces innovatively designed for entertaining and family fun.

With the Brooklyn, it's all about freedom and lifestyle flexibility – just the way you like it.

For more information on the Brooklyn double storey home design, call us on 1300 757 810, or email sales@ansahomes.com.au.



Ground Floor Plan



*Floorplan and home sizing relates to Origin. Other facades may differ slightly.

First Floor Plan

ON DISPLAY AT
HOMEWORLD
 MARSDEN PARK – OPEN 7 DAYS

Contact us on 1300 757 810 or visit ansahomes.com.au

ANSA Homes gives no warranty and make no representation as to the accuracy or sufficiency of any description, illustration, photograph or statement contained in this document and accepts no liability for any loss which may be suffered by any person who relies either wholly or in part upon the information presented. Photographs and illustrations in this brochure are intended to be a visual aid only. All information provided is subject to change without notice. Floor plan size may vary according to façade selected. Copyright ©2019. This plan is the property of ANSA Homes and may not be used in whole or part. Legal action will be taken against any person who infringes the copyright.