

GEORGIA 33



DOUBLE STOREY



5



3



2

Width: 10.60m

Length: 20.74m

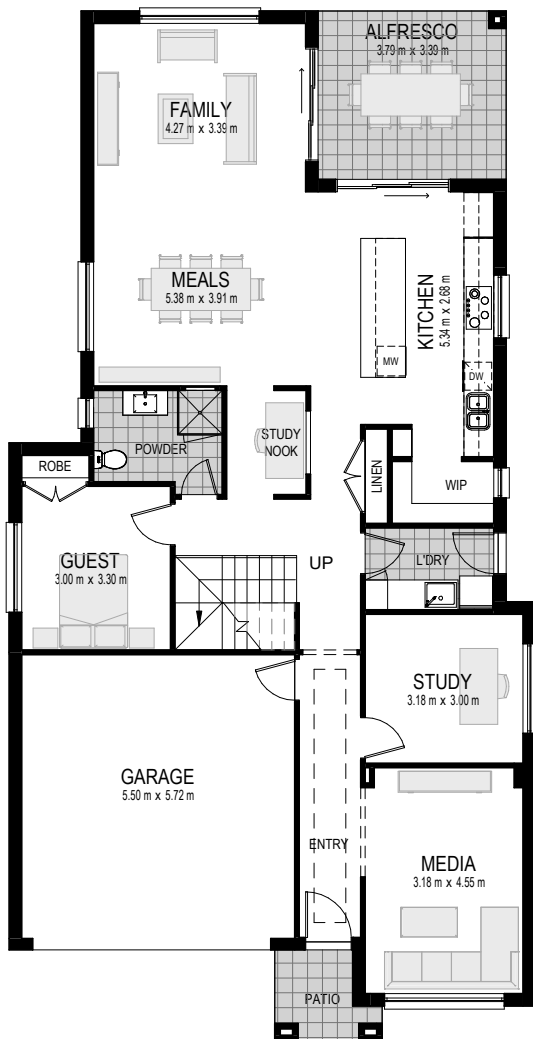
Total Size: 306.45m² / 32.95sq

Frontage: 12.75m

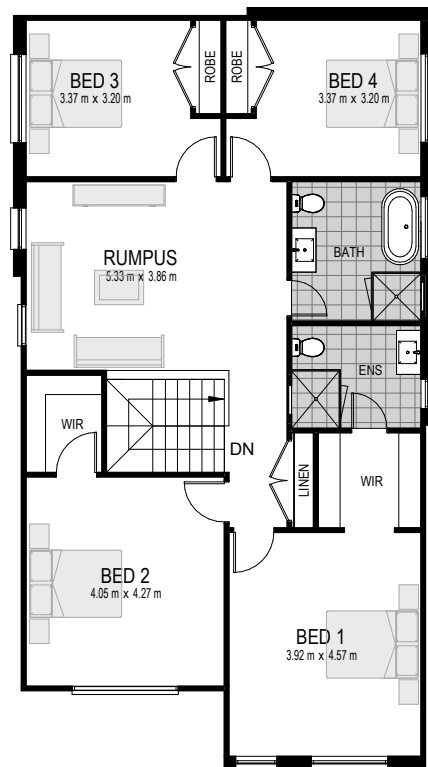
Contemporary design meets easy-living and versatility with the Georgia double storey home. One of our most popular double storey designs, the Georgia has been crafted to maximise comfort and lifestyle to suit families of all sizes. With multiple living areas you're bound to find some 'me time' to relax, or set the kids up in the media room, while you catch up on work in the home office. The Georgia also provides a guest room downstairs to accommodate unexpected visitors or accommodate aging parents.

The Georgia is a double storey home design that is highly versatile and flexible to suit a variety of block sizes.

For more information on the Georgia, call us on 1300 757 810, or email sales@ansahomes.com.au.



Ground Floor Plan



*Floorplan and home sizing relates to ANZAC facade. Other facades may differ slightly.

First Floor Plan



Contact us on 1300 757 810 or visit ansahomes.com.au

ANSA Homes gives no warranty and make no representation as to the accuracy or sufficiency of any description, illustration, photograph or statement contained in this document and accepts no liability for any loss which may be suffered by any person who relies either wholly or in part upon the information presented. Photographs and illustrations in this brochure are intended to be a visual aid only. All information provided is subject to change without notice. Floor plan size may vary according to façade selected. Copyright ©2019. This plan is the property of ANSA Homes and may not be used in whole or part. Legal action will be taken against any person who infringes the copyright.