

# SAHARA 27

A double storey design ideal for narrow blocks.



Austinmer Façade

Make the most of your space with this generously proportioned home – *just the way you like it.*

Contact us on 1300 757 810 or visit [ansahomes.com.au](https://ansahomes.com.au)

# SAHARA 27



**DOUBLE  
STOREY**



**4**



**2.5**



**2**

Width: 14.69m

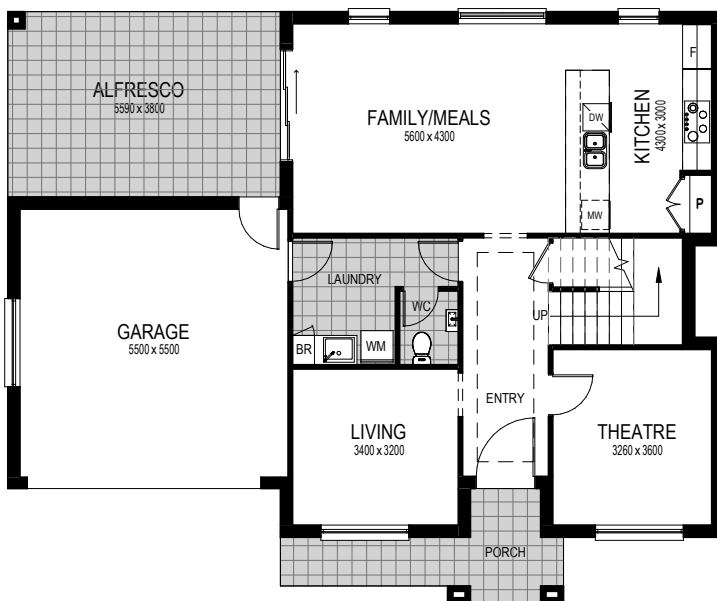
Length: 12.13m

Total Size: 248.80m<sup>2</sup> / 26.75sq

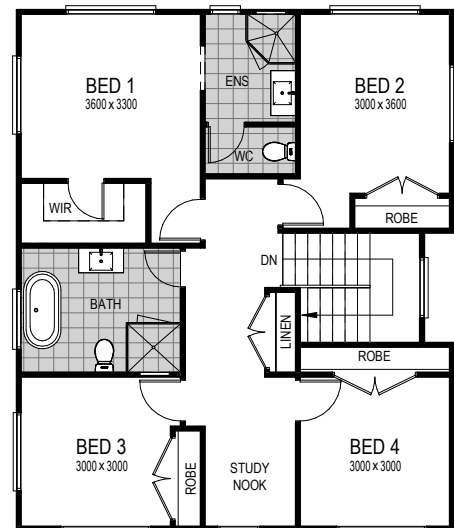
Frontage: 16.03m

When space is at a premium, the Sahara double storey home design excels at making every inch within your home count. With an expansive open plan living, dining and kitchen area that opens on to a generous alfresco space, entertaining large groups has never been easier. The double garage provides an internal entry into the laundry so you can avoid the outdoors if the weather feels like the Sahara (or the Antarctic).

For more information on the Sahara double storey home, call us on 1300 757 810 or email [sales@ansahomes.com.au](mailto:sales@ansahomes.com.au).



**Ground Floor Plan**



\*Floorplan and home sizing relates to Anzac. Other façades may differ slightly.

**First Floor Plan**

Contact us on 1300 757 810 or visit [ansahomes.com.au](http://ansahomes.com.au)

ANSA Homes gives no warranty and make no representation as to the accuracy or sufficiency of any description, illustration, photograph or statement contained in this document and accepts no liability for any loss which may be suffered by any person who relies either wholly or in part upon the information presented. Photographs and illustrations in this brochure are intended to be a visual aid only. All information provided is subject to change without notice. Floor plan size may vary according to façade selected. Copyright ©2019. This plan is the property of ANSA Homes and may not be used in whole or part. Legal action will be taken against any person who infringes the copyright.