

CALYPSO 29



A bright & spacious double storey design.

A modern layout that offers family comfort and lifestyle flexibility – *just the way you like it.*



Austinmer Façade



Industry Façade



Heritage Façade

Contact us on 1300 757 810 or visit ansahomes.com.au

CALYPSO 29



**DOUBLE
STOREY**



4



3



2

Width: 8.70m

Length: 21.63m

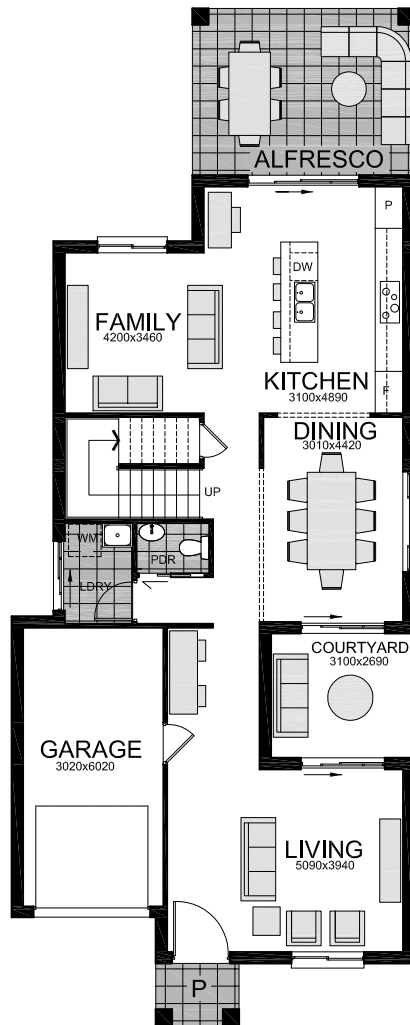
Total Size: 269.57m² / 29.14sq

Frontage: 9.85m

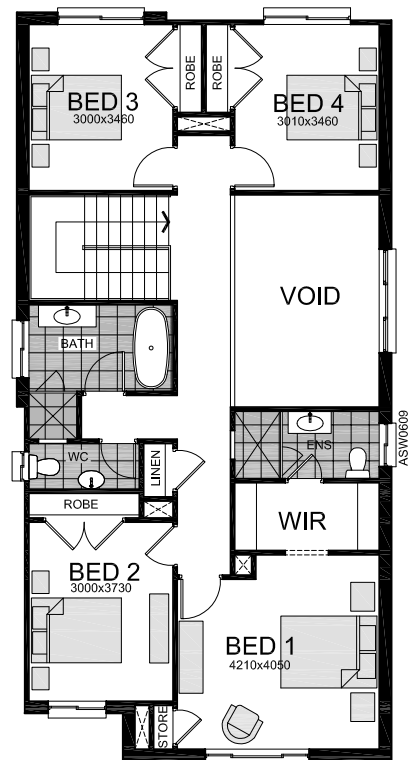
The Calypso is all about natural living spaces. With a free-flowing layout, all communal family areas have been purposefully designed to capture natural light, further enhancing the stylized interior. Each family area opens up to the outdoors, allowing for refreshing airflow throughout the house.

This double storey home is bright and spacious, and offers design flexibility with the option to include a home theatre or study.

For more information on the Calypso, call us on 1300 757 810, or email sales@ansahomes.com.au.



Ground Floor Plan



*Floorplan and home sizing relates to Industry. Other facades may differ slightly.

First Floor Plan

Contact us on 1300 757 810 or visit ansahomes.com.au

ANSA Homes gives no warranty and make no representation as to the accuracy or sufficiency of any description, illustration, photograph or statement contained in this document and accepts no liability for any loss which may be suffered by any person who relies either wholly or in part upon the information presented. Photographs and illustrations in this brochure are intended to be a visual aid only. All information provided is subject to change without notice. Floor plan size may vary according to façade selected. Copyright ©2019. This plan is the property of ANSA Homes and may not be used in whole or part. Legal action will be taken against any person who infringes the copyright.