

AMY 39

Innovative, industry leading 3-in-1 home design.



Meticulously planned to incorporate three independent living spaces under the one roof – *just the way you like it.*



Austinmer Façade



Hamptons Façade



Industry Façade

Contact us on 1300 757 810 or visit ansahomes.com.au

AMY 39



HOUSE & GRANNY FLAT



7



4



2

Width: 13.18m

Length: 22m

Total Size: 358.42m² / 38.53sq

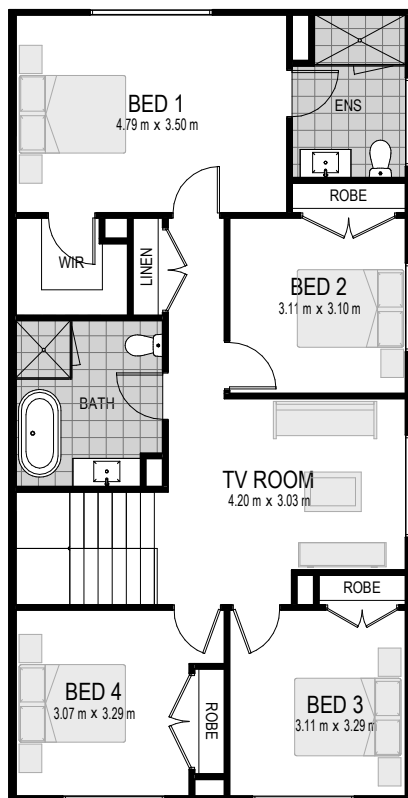
Frontage: 15.33m

The Amy is the ultimate in multi-generational luxurious living. With multiple media and entertainment areas strategically spaced throughout the main house, there is no need for compromise because everyone gets what they want.

A separate 2-bedroom granny flat with private access provides you with the option to capitalise on rental income, or provide (in) dependant living for the extended family or aging parents. The main

home provides not only four generously sized bedrooms, but also a study, media room and extra guest bedroom.

For more information the Amy house & granny flat design, call us on 1300 757 810 or email sales@ansahomes.com.au.



First Floor Plan

*Floorplan and home sizing relates to Industry façade. Other façades may differ slightly.



Ground Floor Plan

ON DISPLAY AT



MARSDEN PARK - OPEN 7 DAYS

Contact us on 1300 757 810 or visit ansahomes.com.au

ANSA Homes gives no warranty and make no representation as to the accuracy or sufficiency of any description, illustration, photograph or statement contained in this document and accepts no liability for any loss which may be suffered by any person who relies either wholly or in part upon the information presented. Photographs and illustrations in this brochure are intended to be a visual aid only. All information provided is subject to change without notice. Floor plan size may vary according to façade selected. Copyright ©2019. This plan is the property of ANSA Homes and may not be used in whole or part. Legal action will be taken against any person who infringes the copyright.